



PROJECT BRIEF

Strengthening vector-borne disease control and community health resilience among vulnerable communities in northern Syria

Vector-borne diseases, particularly cutaneous and visceral leishmaniasis, remain a critical public health threat in northern Syria due to conflict, displacement, weakened health systems, and poor environmental conditions.

In the first half of 2025, over 6,000 cutaneous and 22 visceral leishmaniasis cases were reported in MENTOR-supported facilities, with the highest burden in Aleppo and Idlib governorates. People in vulnerable settings, including internally displaced people, returnees, women, children, and persons with disabilities, face delayed diagnosis and limited access to care. The project responds through an integrated health and Water, Sanitation and Hygiene (WASH) approach, strengthening disease surveillance, case

management, and vector control while building local capacity and community ownership to reduce transmission and prevent outbreaks.

Programme aims:

- Support 9,450 patients with leishmaniasis diagnoses and treatment.
- Protect 507,680 people through indoor residual spraying (IRS).
- Reach 12,000 people through community awareness activities.



OBJECTIVES

The overall project objective is to reduce morbidity and transmission of vector-borne diseases in northern Syria by strengthening local health system capacity, improving access to quality leishmaniasis services, and implementing large-scale vector control and community prevention interventions for vulnerable and conflict-affected populations.

- 1 Strengthen surveillance and case management** through Vector-Borne Disease Units.
- 2 Protect at-risk communities** through IRS and prevention activities.
- 3 Enhance community awareness and inclusive access** to services.



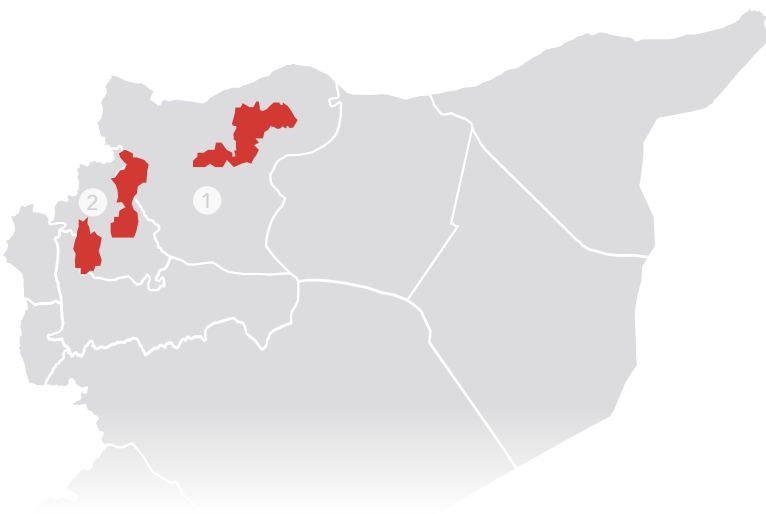
PERIOD

1 September 2025 – 31 August 2026



EXPECTED RESULTS

- Improved access to quality leishmaniasis diagnosis and treatment for communities through three functional Vector-Borne Disease Units and 27 supported health facilities.
- Reduced risk of leishmaniasis transmission through large-scale indoor residual spraying and integrated environmental health interventions.
- Increased community knowledge and adoption of preventive and health-seeking behaviours through inclusive IEC/BCC activities.



PROGRAMME LOCATIONS

- 1 **Aleppo Governorate:** Menbij, Tadef, Atareb, Daret Azza
- 2 **Idleb Governorate:** Mahambal, Ehsem, Saraqab, Kafr Nobol, Teftnaz

TARGETED POPULATION

The project targets conflict-affected and vulnerable populations in high leishmaniasis-burden areas, including internally displaced people, returnees, and vulnerable host communities.



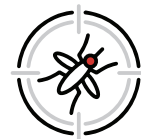
9,450

people reached by direct health services: prioritising women (1,561), children (6,319), IDPs (2,058), and persons with disabilities (1,512)



12,000

people involved in community engagement activities (ensuring inclusive access to prevention information for women, children, IDPs, and persons with disabilities.)



507,689

people living in high-risk locations protected by vector control activities

DONORS

Syria Humanitarian Fund (SHF) / Syria Cross-Border Humanitarian Fund (SCHF) under the 2025 First Standard Allocation