



REDUCING DEATHS AND SUFFERING FROM TROPICAL DISEASES





Implementing Integrated Vector Management in humanitarian emergencies

*One day workshop
Tuesday, July 19, 2016
Hotel Intercontinental
Bangkok, Thailand*



**REDUCING DEATHS AND SUFFERING FROM
TROPICAL DISEASES**



IVM WORKSHOP AGENDA

1. Introduction to VBD & Humanitarian emergencies
2. Overview of common VBD and vectors
3. Overview of vector control tools
4. Integrated Vector Management (IVM) and its application to vector control in complex settings
5. Examples of IVM programs in humanitarian settings
6. Programme design scenarios
7. Discussion and conclusions



REDUCING DEATHS AND SUFFERING FROM
TROPICAL DISEASES



HUMANITARIAN EMERGENCIES

A humanitarian emergency is an event or series of events that represents a critical threat to the health, safety, security or wellbeing of a community or other large group of people, usually over a wide area.

- Natural disasters (tsunami, earthquake, flooding, drought, epidemics)
- Man-made emergencies – conflict
- Humanitarian emergencies may have the compound effects of both man-made and natural disasters. This can be mass population movement coupled with several humanitarian needs (food, shelter)



REDUCING DEATHS AND SUFFERING FROM
TROPICAL DISEASES



VBD IN HUMANITARIAN EMERGENCIES

Populations most affected by humanitarian crises are often those with the *greatest disease burden* leading to increased death and illness in many emergencies

Example: South Sudan – violent conflict and mass displacement have lead to increases in already high levels of malaria, fly-borne diseases and visceral leishmaniasis.



REDUCING DEATHS AND SUFFERING FROM
TROPICAL DISEASES



- Flooding
- Drought
- Earthquakes
- Volcanoes



Haiti Earthquake, 2010

© AFP/Getty Images



Aceh, Indonesia – tsunami Dec 2004



NE Kenya/Somalia Flooding
1997, 2006, 2008, 2011/12

Syrian Conflict
(ongoing)



Sri Lanka conflict – long running



REDUCING DEATHS AND SUFFERING FROM
TROPICAL DISEASES

Typhoon Haiyan , 2013



<http://www.unhcr.org/thumb1/4f755ae36.jpg>



REDUCING DEATHS AND SUFFERING FROM
TROPICAL DISEASES



TOP KILLERS IN HUMANITARIAN CRISES

- Diarrhoeal diseases (water & VBD)
- Malaria (VBD)
- Measles
- Pneumonia
- Malnutrition

Other parasitic and viral disease may predominate in certain regions and change over time.



REDUCING DEATHS AND SUFFERING FROM
TROPICAL DISEASES



VULNERABILITIES IN EMERGENCIES

- Increased exposure due to lack of shelter (increased exposure to vectors)
- Reduced access to healthcare services
- Poor sanitation (increasing human/fly contact)



REDUCING DEATHS AND SUFFERING FROM
TROPICAL DISEASES



VULNERABILITY IN EMERGENCIES

- Crowding of infected and susceptible hosts where competent vector is present
- Proximity to flood waters / breeding sites (increasing insect contact)
- Poor nutrition & multiple infections, decreasing capacity of immune system



REDUCING DEATHS AND SUFFERING FROM
TROPICAL DISEASES



VULNERABILITIES IN EMERGENCIES

RESULTS IN:

- Increase in VBD morbidity and mortality
- Persistence of VBD for months and years after
- Burden of diseases increase if left uncontrolled.
(death is not always the end result e.g. leishmaniasis)

VBD should have attention at the beginning, even if they are not immediately a threat



REDUCING DEATHS AND SUFFERING FROM
TROPICAL DISEASES



VBD IN HUMANITARIAN EMERGENCIES

Examples:

- *Natural disasters including Cyclone Nargis in Myanmar and the Haiti earthquake have resulted in increases in both dengue and malaria vectors.*
- *Increasing violence in the Middle East has caused the largest human displacement in decades. A consequence of this tragedy has been the re-emergence of cutaneous leishmaniasis*



REDUCING DEATHS AND SUFFERING FROM
TROPICAL DISEASES



VBD OF IMPORTANCE

- Malaria (Africa, Asia, Caribbean)
- Dengue (Asia, Caribbean, Africa)
- Leishmaniasis (Middle East)
- Other VBD will depend on the local setting e.g. Lymphatic Filariasis, Yellow Fever, Sleeping sickness, Viral haemorrhagic Fevers (Lassa, CCHF, RVF), Japanese Encephalitis, Tick-borne Relapsing Fever, Zika, Trachoma



REDUCING DEATHS AND SUFFERING FROM
TROPICAL DISEASES





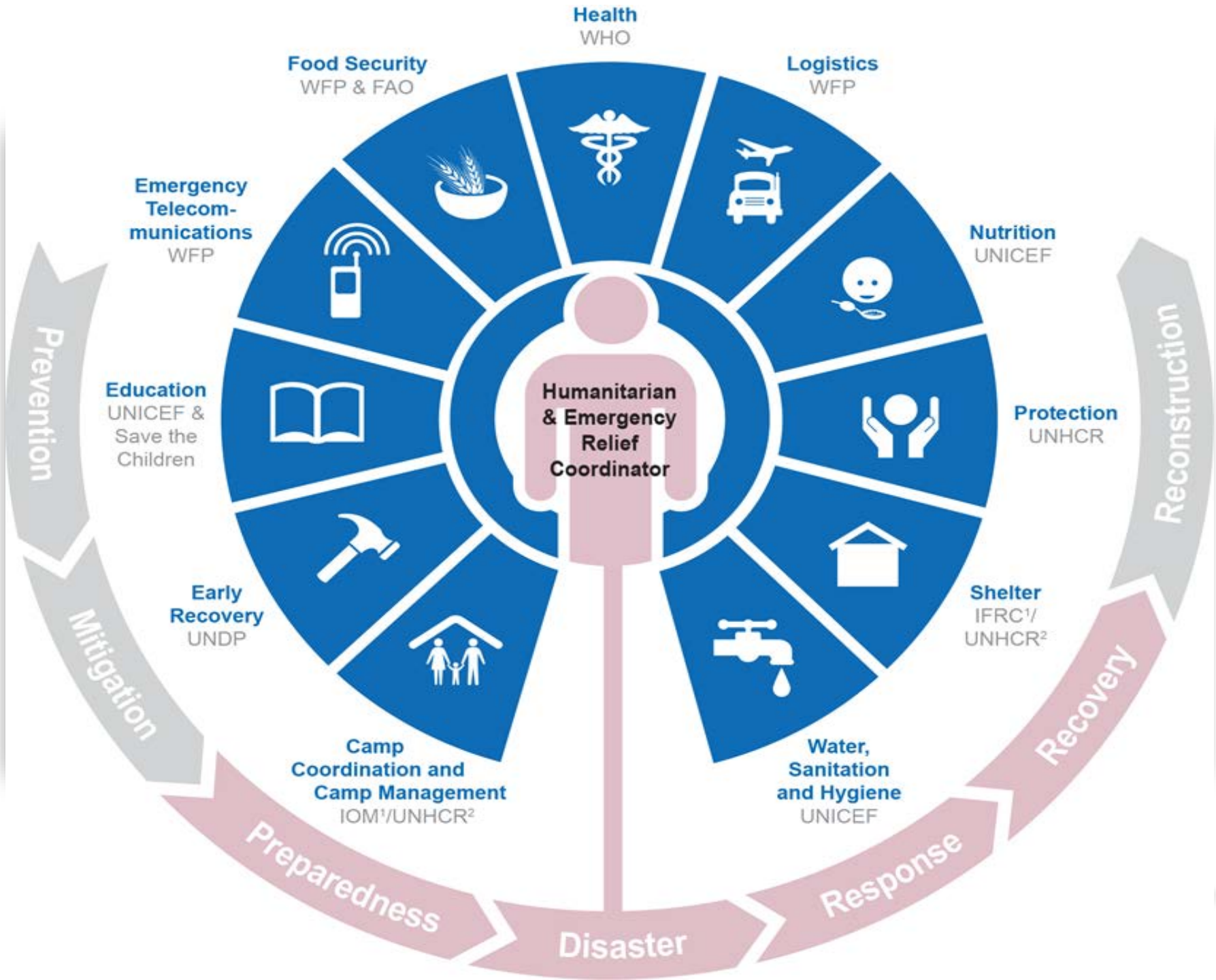
HUMANITARIAN RESPONSE STRUCTURE

Cluster approach



REDUCING DEATHS AND SUFFERING FROM
TROPICAL DISEASES





HUMANITARIAN CLUSTER APPROACH

- There are currently eleven clusters led by WHO
- Clusters provide a clear point of contact and leadership for specific activities during humanitarian response

Infectious diseases fall under the health cluster



REDUCING DEATHS AND SUFFERING FROM
TROPICAL DISEASES



CLUSTER APPROACH

Vector control does not fall into one cluster

- It crosscuts WASH, shelter and camp management, NFI and the Health Cluster
- Coordination between the different actors is important to ensure vector control tools are appropriately selected and used.



REDUCING DEATHS AND SUFFERING FROM
TROPICAL DISEASES



PRINCIPAL VBD CONTROL MEASURES

- **Camp organisation & Shelter**– adequate numbers of shelters and sufficient space between them, adequately ventilated, insect-proofed and sited away from standing water, close enough to water and sanitation facilities
- **Water, sanitation, hygiene (WASH)** – sufficient quantities of safe water and adequate sanitation facilities and hygiene promotion



REDUCING DEATHS AND SUFFERING FROM
TROPICAL DISEASES



PRINCIPAL CONTROL MEASURES

- **Health education and social mobilisation** – develop messages to ensure the effective implementation of the above preventive measures.
- **Environmental sanitation and safe waste management and vector control**
- **Food security, nutrition and food assistance** – access to adequate food and management of malnutrition



REDUCING DEATHS AND SUFFERING FROM
TROPICAL DISEASES





OVERVIEW VECTOR BORNE DISEASES



REDUCING DEATHS AND SUFFERING FROM
TROPICAL DISEASES



VECTOR BORNE DISEASES

A vector-borne disease is caused by a **pathogenic microorganism** transmitted by an **arthropod** or **other agent**. Transmission requires at least **three** different living organisms:

- *Pathogenic agent* (virus, protozoa, bacteria, or helminth)
- *Vector* (arthropods such as ticks or mosquitoes)
- *Host*



REDUCING DEATHS AND SUFFERING FROM
TROPICAL DISEASES



VECTOR BORNE DISEASES

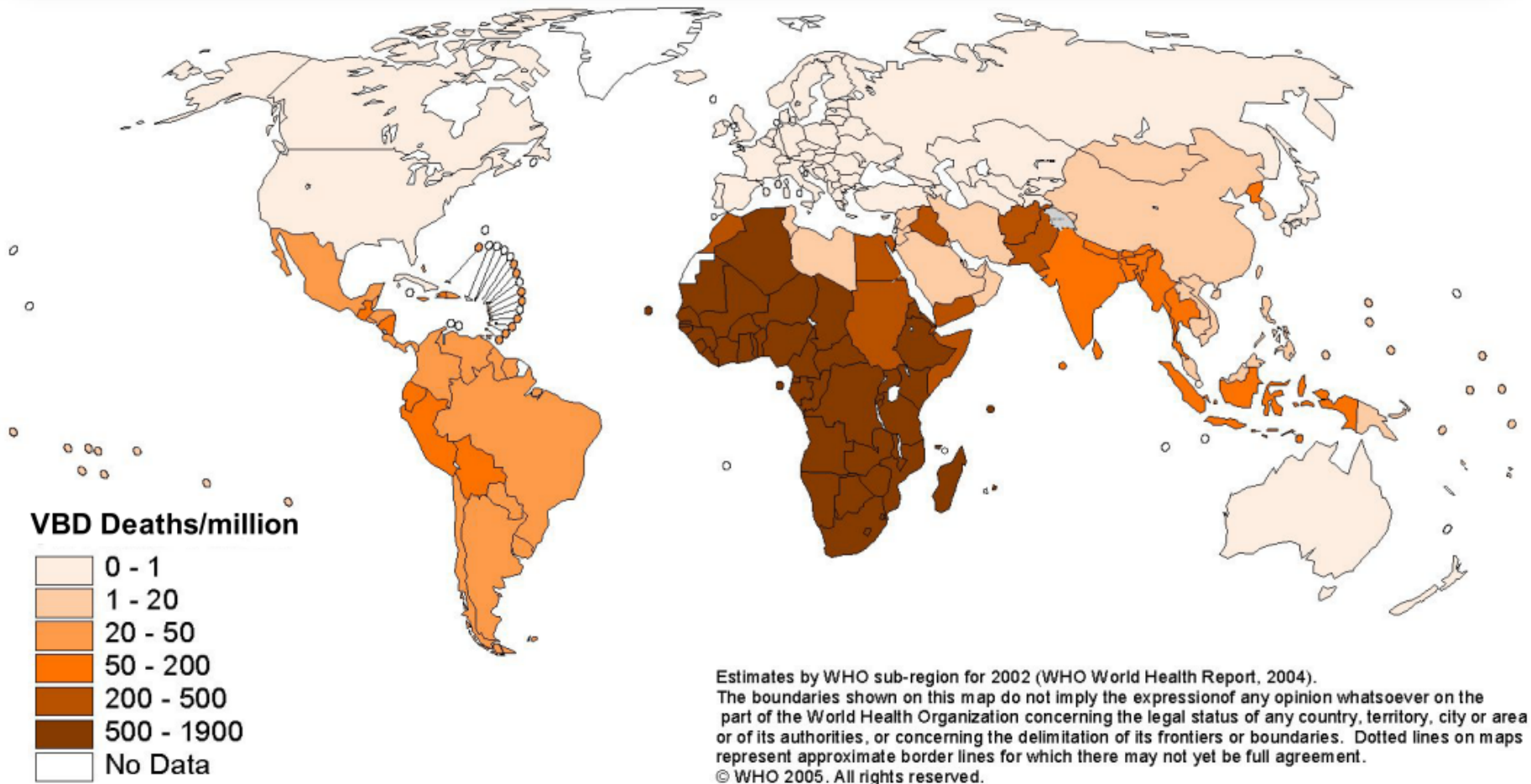
- Nearly half the world's population is infected with or at risk for VBDs.
- Distribution of VBDs is disproportionate **mainly in developing countries in the tropics.**
- Weather affects vector population dynamics and transmission: **temperature and humidity**
- **Natural disasters, mass population movements result in changes which can increase disease transmission**



REDUCING DEATHS AND SUFFERING FROM
TROPICAL DISEASES



DISTRIBUTION OF DEATH FROM VBD



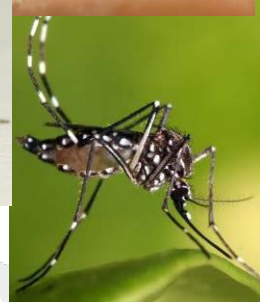
REDUCING DEATHS AND SUFFERING FROM TROPICAL DISEASES



VECTORS

- Mosquitoes

- *Anopheles* transmit malaria, arboviruses
- *Culex* transmit filariasis, arboviruses
- *Aedes* transmit filariasis, dengue, Zika, Chikyngunya, Yellow Fever



- Tsetse Flies

- Transmit African Sleeping sickness



- Sandflies

- Transmit Leishmaniasis



REDUCING DEATHS AND SUFFERING FROM
TROPICAL DISEASES



Vectors

- Black Flies
 - Transmit onchocerciasis
- Water Snails
 - Carry schistosomiasis
- Flies
 - Transmit trachoma, cholera, myiasis, Loa Loa
- Body Lice
 - Transmit typhus, louse-relapsing fever



Vectors

- Ticks
 - Transmit bacterial (relapsing fever borreliosis)
- Fleas
 - Transmit bacteria (plague, rickettsia)
- Rodents
 - Transmit hantavirus
- Rats
 - Transmit Lassa Fever, Leptospirosis



REDUCING DEATHS AND SUFFERING FROM
TROPICAL DISEASES



VECTOR BEHAVIOUR – WHAT TO ASK

- Where do they breed?
- When do they breed?
- Duration of lifecycle
- What do they eat?
- When do they eat?
- Where do they eat?
- Where do they rest?
- How far do they fly?



REDUCING DEATHS AND SUFFERING FROM
TROPICAL DISEASES



VECTOR BEHAVIOUR - MOSQUITOES

	Anopheles	Aedes	Culex
Breeding Site	Rainwater / swamps. Brakish water (depending on species)	Dark background container with clean non-polluted water	Polluted vegetative water
Biting Time	Dusk to Dawn	Day Time biters 1-2 hrs after sunrise 1-2 hrs before sunset	Dusk to Dawn
Biting preference	Anthropophilic and Zoophilic depending on species	anthropophilic	Anthropophilic and zoophilic
Biting location	Bites indoors	Bites primarily outside	Both inside and outside
Resting location	Rests indoors	Rests ioutdoors dark corners,shade, away from indoor light	Rests indoors and outdoors in dark areas
Flight Distance	2 km or more	50-300 m from breeding source	2 km or more
Life Span	10 -30 days	20-30 days	20-30 days



REDUCING DEATHS AND SUFFERING FROM TROPICAL DISEASES



VBD CONTROL IN EMERGENCIES

- **Rapid assessments** – identify diseases threats to affected population as well as those with epidemic potential
- **Prevention activities** – vector control, fly control, WASH activities, mass drug administration
- **Surveillance** – determine incidence of disease, monitor on-going changes in disease transmission.
 - the surveillance system should be robust enough to detect outbreaks of VBD and whether response activities are having an impact



REDUCING DEATHS AND SUFFERING FROM
TROPICAL DISEASES



VBD CONTROL IN EMERGENCIES

- **Outbreak control** –sudden or unexpected increases in transmission. Requires adequate preparedness, monitoring and provision of stockpiles for response activities
- **Case management** - diagnostic & treatment services are important aspects of disease control *but for this workshop we are focusing on vector control*



REDUCING DEATHS AND SUFFERING FROM
TROPICAL DISEASES



SURVEYS

Used when the local VBD situation is not clear or there is no data available

Clinical surveys can:

- Identify population groups most at risk of specific VBDs
- Estimate the proportion of the population infected with the diseases



REDUCING DEATHS AND SUFFERING FROM
TROPICAL DISEASES



ENTOMOLOGICAL SURVEYS

- *Larval surveys* to identify the hotspots for transmission and repeat to monitor impact of interventions
- *Adult vector catches* before intervention, repeating post campaign to determine impact
- *Insecticide susceptibility*
- *Human biting rate & vector infection rate* can also be used



REDUCING DEATHS AND SUFFERING FROM
TROPICAL DISEASES





VECTOR BORNE DISEASES & INTEGRATED VECTOR MANAGEMENT



REDUCING DEATHS AND SUFFERING FROM
TROPICAL DISEASES



WHO progress towards an (IVM) approach

- **Early 1980s: integrated vector control (IVC)**
 - “utilization of all appropriate, safe and compatible means of control to bring about an effective degree of vector suppression in a cost-effective manner” (WHO 1983)



REDUCING DEATHS AND SUFFERING FROM
TROPICAL DISEASES



WHO progress towards an (IVM) approach

Early 1990s:

- **selective vector control (SVC)**
 - “application of targeted, site specific & cost-effective activities to reduce malaria morbidity and mortality” (WHO 1992, 1995)
- **comprehensive vector control (CVC)**
 - “control of the vectors of two or more co-prevalent diseases through a unified managerial structure using similar or different methods”



REDUCING DEATHS AND SUFFERING FROM
TROPICAL DISEASES



IVM DEFINITION (WHO)

Integrated Vector Management (IVM)

“IVM is a rational decision-making process for the optimal use of resources for vector control.

The approach seeks to improve the efficacy, cost-effectiveness, ecological soundness and sustainability of disease-vector control” (WHO 2007)



REDUCING DEATHS AND SUFFERING FROM
TROPICAL DISEASES



Mapping the distributions of vector-borne diseases

P. falciparum



Onchocerciasis



Leishmaniasis



Dengue



P. vivax



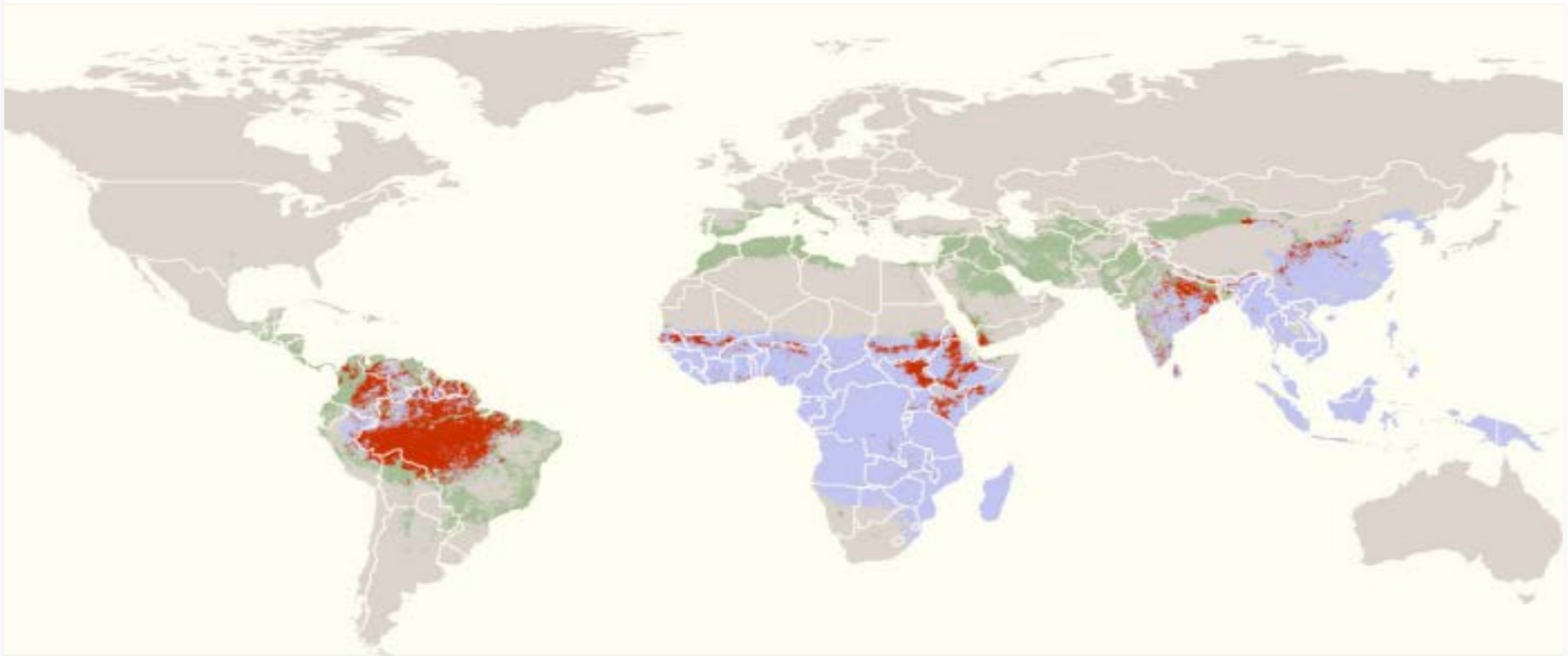
also: **Japanese encephalitis,**
human African trypanosomiasis
& Chagas disease



REDUCING DEATHS AND SUFFERING FROM
TROPICAL DISEASES



Areas where malaria and leishmaniasis could be controlled with ITNs



malaria



leishmaniasis



malaria & leishmaniasis



REDUCING DEATHS AND SUFFERING FROM
TROPICAL DISEASES



RATIONALE FOR IVM

- Using evidence based strategies will *reduce use of ineffective tools*, improves economic & ecological soundness of interventions, and sustainability
- Collaboration between sectors and programs will allow *cost effective use of resources*
- Integration of *non-chemical and chemical vector control methods*, and integration with other disease control measures. i.e. LLIN + MDAs, chemical larvaciding + domestic waste management.



REDUCING DEATHS AND SUFFERING FROM
TROPICAL DISEASES





IMPLEMENTING INTEGRATED VECTOR MANAGEMENT (IVM)



REDUCING DEATHS AND SUFFERING FROM
TROPICAL DISEASES



KEY TO IVM

- *Key to IVM is evidence-based decision making*
 - operational research, entomological & epidemiological surveillance and evaluation. Understanding the vectors present, their habits and the local ecosystem.
- *Entomology prior to operations*
 - includes insecticide resistance monitoring and species differentiation, all of which may impact the choice of methods of vector control.



REDUCING DEATHS AND SUFFERING FROM
TROPICAL DISEASES



IVM OPERATIONAL ISSUES

- Effectiveness of insecticide-based vector control is threatened by resistance to the insecticides
 - IRS has three other chemical classes so can be used even when insecticide resistance is becoming a problem, LLINs only have one chemical class
- Under operational conditions, functional survival of tools like LLINs are considerably reduced
 - Using IVM more than one tool for one vector could have added effect on vector reduction.



REDUCING DEATHS AND SUFFERING FROM
TROPICAL DISEASES



Operational Framework - IVM

- 1. Advocacy, social mobilization*
- 2. Collaboration within the health sector & with other sectors*
- 3. Integration of non-chemical and chemical vector control*
- 4. Evidence-based decision making*
- 5. Development of adequate human resources*



REDUCING DEATHS AND SUFFERING FROM
TROPICAL DISEASES



IVM - SITUATIONAL ANALYSIS

Focus on the vector(s) that spread the disease:

- *Initial assessment*: Outbreak response/rapid surveys/Baseline surveys
- *Vector analysis*: behaviour-feeding and resting habit)
- *Literature review*: National documents, pubmed
- *What is in place*: Surveillance, vector control tools delivered / planned for, human resources.



REDUCING DEATHS AND SUFFERING FROM
TROPICAL DISEASES



IVM IMPLEMENTATION

Deciding which tool(s) to use:

- *Tools in use already and their coverage/effectiveness*
- *Insecticide resistance*
- *Community acceptability*
- *Available funding*
- *Targeted beneficiaries*
- *Seasonality of disease transmission*
- *Which tools can arrive in time?*
- *Shipped easily*
- *Nationally approved*



REDUCING DEATHS AND SUFFERING FROM
TROPICAL DISEASES



WHEN TO INTEGRATE

Determine if vector control/prevention efforts will be helpful:

- If cases have been transported into the area then treatment should be sufficient to reduce disease burden
- Better to get high coverage of one vector control tool than sub-optimum levels of two tools
- Integration should not be done for the sake of it. There has to be a justification.



REDUCING DEATHS AND SUFFERING FROM
TROPICAL DISEASES





VECTOR CONTROL TOOLS



REDUCING DEATHS AND SUFFERING FROM
TROPICAL DISEASES



VECTOR CONTROL TOOLS

Vectors in emergencies can be controlled through:

- Appropriate site selection and provision of shelter
- Water supply, excreta disposal, solid waste management, drainage
- Community behaviour change
- Family and individual protection, and effective protection of food stores.
- Use of chemical controls



REDUCING DEATHS AND SUFFERING FROM
TROPICAL DISEASES



VECTOR CONTROL TOOLS

- LLIN (Long lasting insecticidal nets)
- IRS (Indoor residual spraying)
- Larval source management
 - Environmental management/ habitat modification
 - Larvaciding (chemical or biological)
- Fogging/ultra-low volume spraying
- Insecticide treated materials
- Waste management



REDUCING DEATHS AND SUFFERING FROM
TROPICAL DISEASES





LONG LASTING INSECTICIDAL NETS AND DISTRIBUTION STRATEGIES



REDUCING DEATHS AND SUFFERING FROM
TROPICAL DISEASES



WHAT IS AN LLIN?

- Nets that have been treated with insecticide (pyrethroid) during production, either coated or incorporated into the fibers.
- Residual insecticide will continue to be effective for min 3 years
- LLINs do not need to be retreated
- LLINs are proven to withstand 20 washes
- Physical Durability of the LLIN is variable depending upon living conditions and fabric of LLIN (polyethylene, polyester, polypropylene)



REDUCING DEATHS AND SUFFERING FROM
TROPICAL DISEASES



VECTORS TARGETED BY LLINS

- *Anopheles* – Malaria, Lymphatic filariasis
- *Phlebotomous* (Sandfly) – Leishmaniasis
- *Culex* – Lymphatic Filariasis, Japanese Encephalitis
- *Aedes* – (in certain contexts) Dengue, Zika, CHK



REDUCING DEATHS AND SUFFERING FROM
TROPICAL DISEASES



WHY LLINS?

- Easily available tool for malaria prevention
- Perceived to be most easy to use component of IVM
- Can be effective for up to 3 years
- Once distributed can be carried with families



WHOPES RECOMMENDED LLINS

WHO recommended long-lasting insecticidal nets

<i>Product name</i>	<i>Product type</i>	<i>Status of WHO recommendation</i>	<i>Status of publication of WHO specification</i>
DawaPlus 2.0	Deltamethrin coated on polyester	Interim	Published
Duranet	Alpha-cypermethrin incorporated into polyethylene	Full	Published
Interceptor	Alpha-cypermethrin coated on polyester	Full	Published
LifeNet	Deltamethrin incorporated into polypropylene	Interim	Published
MAGNet	Alpha-cypermethrin incorporated into polyethylene	Full	Published
MiraNet	Alpha-cypermethrin incorporated into polyethylene	Interim	Published
Olyset Net	Permethrin incorporated into polyethylene	Full	Published
Olyset Plus	Permethrin and PBO incorporated into polyethylene	Interim	Published
Panda Net 2.0	Deltamethrin incorporated into polyethylene	Interim	Published
PermaNet 2.0	Deltamethrin coated on polyester	Full	Published
PermaNet 3.0	Combination of deltamethrin coated on polyester with strengthened border (side panels), and deltamethrin and PBO incorporated into polyethylene (roof)	Interim	Published
Royal Sentry	Alpha-cypermethrin incorporated into polyethylene	Full	Published
SafeNet	Alpha-cypermethrin coated on polyester	Full	Published
Veeralin	Alpha-cypermethrin and PBO incorporated into polyethylene	Interim	Published
Yahe	Deltamethrin coated on polyester	Interim	Published
Yorkool	Deltamethrin coated on polyester	Full	Published



REDUCING DEATHS AND SUFFERING FROM TROPICAL DISEASES



DISTRIBUTION CAMPAIGNS



REDUCING DEATHS AND SUFFERING FROM
TROPICAL DISEASES



LLIN CAMPAIGN PLANNING

1. Assessment
2. Coordination – Macroplan / Microplans
3. Selection and Training of Workers
4. Transportation / Storage / Security
5. Household remuneration
6. Mobilisation and Awareness (IEC / BCC)
7. Distribution/ waste management
8. Continued BCC
9. Supervision and Monitoring (durability, coverage, usage)



REDUCING DEATHS AND SUFFERING FROM
TROPICAL DISEASES



LOGISTICS



REDUCING DEATHS AND SUFFERING FROM
TROPICAL DISEASES





TYPES OF DISTRIBUTIONS

1. Non Food Items (NFI) / Airdrops
2. Continuous distribution (EPI/ANC/School/Community)
3. Universal Coverage Fixed point vs Mobile vs Door to door
4. Integrated distribution
5. Targeted distribution (populations, age groups)
6. *Subsidised sale (NON EMERGENCY)*
7. *Commercial market (NON EMERGENCY)*



REDUCING DEATHS AND SUFFERING FROM
TROPICAL DISEASES



CONDITIONS FOR IMPACT

- Good coverage and continuous distribution
- Appropriate usage
- Care and Repair



LLIN CHALLENGES

- Ownership does not guarantee use
- Intense support for behavior change needed
- Distribution costs / lead time of LLIN / logistics
- Fit to shelter
- Commonly misused / resold
- Not always prioritized for/ by the most vulnerable
- Relies on people sleeping largely indoors at night
- Using LLINs for political influence



REDUCING DEATHS AND SUFFERING FROM
TROPICAL DISEASES



Good condition after
2 years




Poor condition after
9 months



REDUCING DEATHS AND SUFFERING FROM
TROPICAL DISEASES





INDOOR RESIDUAL SPRAYING (IRS)



REDUCING DEATHS AND SUFFERING FROM
TROPICAL DISEASES



VECTORS TARGETED

- *Anopheles*
- *Phlebotomous* Sand-fly
- Fleas (IRS on floors and rodent holes)
- Flies



REDUCING DEATHS AND SUFFERING FROM
TROPICAL DISEASES



IRS IS EFFECTIVE IF

- IRS is done in communities affected by vectors that rest indoors, (e.g. *anopheles gambiae*)
- The insecticide is effective against the vector
- The target population lives in shelters made of materials appropriate for spraying
- The spray equipment meets WHO standards
- Application of insecticide is done properly



REDUCING DEATHS AND SUFFERING FROM
TROPICAL DISEASES



IRS IS EFFECTIVE IF

- At least **85% of surfaces** are sprayed to assure that the majority of mosquitoes are exposed to the insecticide
- At least **85% of walls (2 metres high)** are sprayed with insecticide before the high transmission period (rainy season)



REDUCING DEATHS AND SUFFERING FROM
TROPICAL DISEASES



ADVANTAGES OF IRS

- Anything people sleep in (huts, hospitals, plastic shelters, transit halls, latrines) can be sprayed
- Operationally feasible
- Cannot be looted or sold once applied
- Community coverage effect over 85%
- Can be used where there is insecticide resistance to pyrethroids



REDUCING DEATHS AND SUFFERING FROM
TROPICAL DISEASES





DISADVANTAGES OF IRS

- Time, Logistics, Material resources/cost
- Access during emergencies can be difficult
- People absent from homes
- Dependent on skilled teams
- Safety for handlers/sprayers
- Impact variable depending on shelter materials
- Fear of chemicals in communities
- Field supervision & monitoring

THESE CAN BE OVERCOME!!



REDUCING DEATHS AND SUFFERING FROM
TROPICAL DISEASES





INSECTICIDE SELECTION

- Only WHOPEs recommended insecticides.
- Insecticide and formulations are registered in the country, unless you have specific permission in writing from the host government/authority.
- Resistance to the insecticides.
- Check suitability for the application intended
- Availability
- Cost



REDUCING DEATHS AND SUFFERING FROM
TROPICAL DISEASES



WHOPE'S APPROVED INSECTICIDES - IRS

<i>Insecticide compounds and formulations</i> ¹	<i>Class group</i> ²	<i>Dosage (g a.i./m²)</i>	<i>Mode of action</i>	<i>Duration of effective action (months)</i>
<i>DDT WP</i>	OC	1-2	contact	>6
<i>Malathion WP</i>	OP	2	contact	2-3
<i>Fenitrothion WP</i>	OP	2	contact & airborne	3-6
<i>Pirimiphos-methyl WP, EC</i>	OP	1-2	contact & airborne	2-3
<i>Pirimiphos-methyl CS</i>	OP	1	contact & airborne	4-6
<i>Bendiocarb WP, WP-SB</i>	C	0.1-0.4	contact & airborne	2-6
<i>Propoxur WP</i>	C	1-2	contact & airborne	3-6
<i>Alpha-cypermethrin WP, SC</i>	PY	0.02-0.03	contact	4-6
<i>Alpha-cypermethrin WG-SB</i>	PY	0.02-0.03	contact	up to 4
<i>Bifenthrin WP</i>	PY	0.025-0.05	contact	3-6
<i>Cyfluthrin WP</i>	PY	0.02-0.05	contact	3-6
<i>Deltamethrin SC-PE</i>	PY	0.02-0.025	contact	6
<i>Deltamethrin WP, WG, WG-SB</i>	PY	0.02-0.025	contact	3-6
<i>Etofenprox WP</i>	PY	0.1-0.3	contact	3-6
<i>Lambda-cyhalothrin WP, CS</i>	PY	0.02-0.03	contact	3-6

Updated
March
2015



REDUCING DEATHS AND SUFFERING FROM
TROPICAL DISEASES





INSECTICIDE TREATED PLASTIC SHEETING (ITPS)



REDUCING DEATHS AND SUFFERING FROM
TROPICAL DISEASES



Insecticide Treated Plastic Sheeting (ITPS)

Dual purpose tool to:

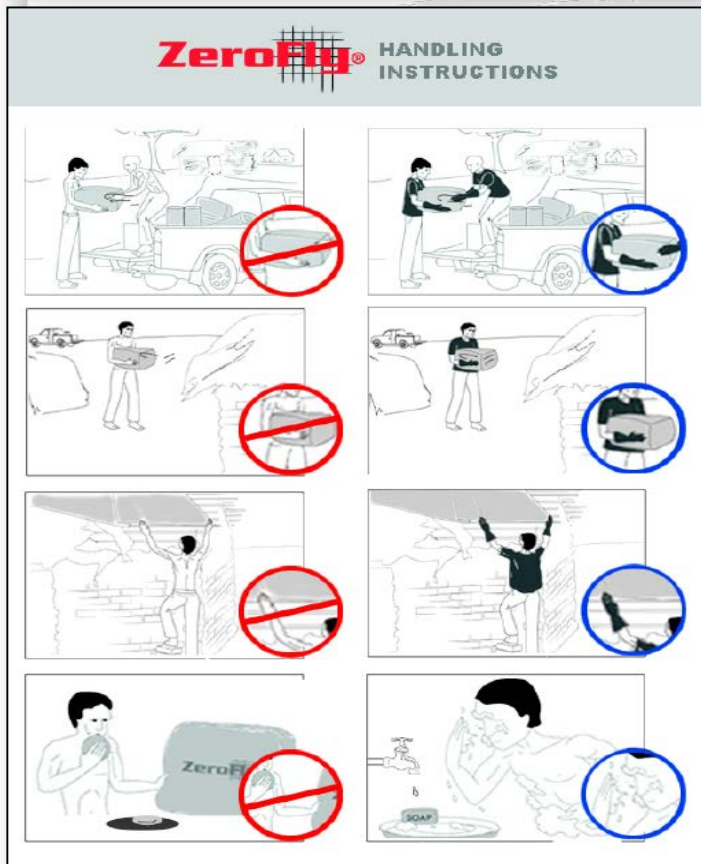
- Save delivery time
- Reduce dependency on specialised control teams
- Improve acceptability and compliance and target whole household (like IRS)
- Long lasting
- Cost effective: shelter & vector control



REDUCING DEATHS AND SUFFERING FROM TROPICAL DISEASES



ITPS use in emergencies to date



- 14000 Liberian refugees housed in 2 camps in Sierra Leone (2003-2005/6) (MENTOR/UNHCR)
- 13000 Liberian IDPs housed in 2 camps in Liberia (2003-2005) (IRC & other NGOs)
- Also used by NGOs in Darfur (MSF H) and Haiti (ICRC)
- Tsunami (Indonesia) 120,000 people housed along the Aceh west coast (+ 550,000 under IRS): MENTOR, + 12 NGOs (PCI, IRC, IMC, WV, SCF, etc)
- 100,000 displaced people housed after flooding in Somalia (2011 - MENTOR/UNICEF)



REDUCING DEATHS AND SUFFERING FROM TROPICAL DISEASES



2006: Earth quake victims protected in Java





ITPS schools and community buildings



RED
TROC

User acceptability survey

- ITPS proved feasible to use on varied Indonesian shelter/ house designs
- The majority of people built their own shelters after seeing a community model
- 82% said that ITPS had a significant impact on insect of all types
- 94.5% reported no incidence of malaria or dengue whilst living under ITPS
- Minor irritation was noted by 70% (maybe due to not using gloves)
- 73% said they would be happy to live under ITPS again



REDUCING DEATHS AND SUFFERING FROM
TROPICAL DISEASES





LARVAL SOURCE MANAGEMENT



REDUCING DEATHS AND SUFFERING FROM
TROPICAL DISEASES



VECTORS TARGETED

Mosquito:

- *Aedes*
- *Culex*
- *Anopheles* (supplementary tool)
- **Black fly** - aerial spraying of rivers and streams using helicopters and airplanes
- **Tsetse fly** - sequential aerosol spraying technique (SAT), ground spraying



REDUCING DEATHS AND SUFFERING FROM
TROPICAL DISEASES



LARVICIDING

- Mosquito larvae control requires regular application of a larvicide to standing water, where ideally breeding sites are **FEW, FIXED and FINDABLE**
- Larvicide such as Temephos, Pyriproxyfen or BTI can be applied to **drinking water sources** either by sand granules or spraying



REDUCING DEATHS AND SUFFERING FROM
TROPICAL DISEASES



LARVAL CONTROL

- Larvivorous fish (*Gambusia*) or Mayfly nymphs, can also be used but only suitable for specific contexts **(NOT EMERGENCY)**
- In areas where *A. aegypti* breeds in septic tanks or soak-away pits, expanded polystyrene beads can be applied, as long as the sites are not subject to regular flooding



REDUCING DEATHS AND SUFFERING FROM
TROPICAL DISEASES



LARVICIDING



REDUCING DEATHS AND SUFFERING FROM
TROPICAL DISEASES



Larvaciding domestic water tanks and storage pots to kill mosquito larvae



REDUCING DEATHS AND SUFFERING FROM TROPICAL DISEASES





REDUCING DEATHS AND SUFFERING FROM
TROPICAL DISEASES





LARVICIDING REQUIREMENTS

- Larvicide measurements
- Trained staff
- Spraying equipment / PPE
- Mapping and recording of sites treated
- **REQUIRES STRONG COMMUNITY SENSITISATION**



REDUCING DEATHS AND SUFFERING FROM
TROPICAL DISEASES



WHOPES - Larvicide Compounds & Formulations

Larvicide	Chemical Type	Active Ingredient dosage g/ha	Formulation
<i>B. thuringensis isr. (BTI)</i>	Biopesticide	*	
Diflubenzuron	Insect Growth Regulator (IGR)	25-100	Water-dispersible granules
Methoprene	IGR	20-40	Wettable powder
Pyriproxyfen	IGR	5-10	Granules
Chlorpyrifos	Organophosphate	11-25	Emulsifiable concentrate
Fenthion	Organophosphate	22-112	Emulsifiable concentrate, granules
Pirimphos-methyl	Organophosphate	50-500	Emulsifiable concentrate
Temephos (Abate)	Organophosphate	56-112	Emulsifiable concentrate/ granules

* Open bodies of water 125-750g/ha; 1-5 mg/l for containers



REDUCING DEATHS AND SUFFERING FROM TROPICAL DISEASES



LARVICIDING

Precautions

- Extreme care taken when treating drinking-water to avoid dosages toxic to humans.
- Wear protective gear



REDUCING DEATHS AND SUFFERING FROM
TROPICAL DISEASES



LARVICIDING

Treatment cycle

Cycle determined by mosquito species, seasonality of transmission, rainfall patterns, properties of larvicide, and types of breeding site.

- Generally 2-3 treatments/year, carefully spaced between periods of rainfall
- More frequent treatment depending on water quality and exposure to sun.



REDUCING DEATHS AND SUFFERING FROM
TROPICAL DISEASES



LARVICIDING CHALLENGES

- Larvaciding *large or multiple water bodies is very expensive* and requires many staff for potentially little impact as breeding sites are so numerous
- *Water supplies in emergencies* (particularly acute phases) are rare, highly valued
- *Acceptance issue* with spraying/treating valued water sources



REDUCING DEATHS AND SUFFERING FROM
TROPICAL DISEASES



ENVIRONMENTAL CONTROL

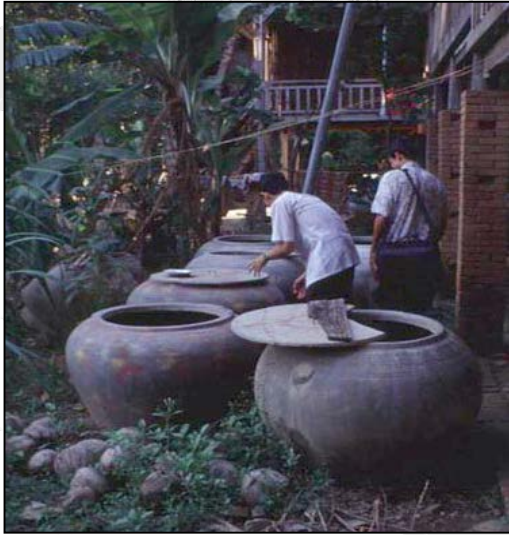
- Elimination of mosquito breeding sites
- This is not usually feasible because of human resources needed, the extent of the breeding sites and operational cost
- Some breeding sites may also be the only available water for the population



REDUCING DEATHS AND SUFFERING FROM
TROPICAL DISEASES



ENVIRONMENTAL CONTROL



Rubbish clearance to remove other vector breeding sites like car tires, old tins etc.

Covering water storage containers



REDUCING DEATHS AND SUFFERING FROM TROPICAL DISEASES





COVERING OF WATER CONTAINERS



Lids, insecticide treated container covers

Supplementary: ITPS or insecticide treated Curtains



REDUCING DEATHS AND SUFFERING FROM
TROPICAL DISEASES



ENVIRONMENTAL CONTROL

- Cover all household containers that hold water, if possible with insecticide treated materials
- Clean out smaller water storage containers weekly, and scrub sides
- Remove or destroy debris/waste containers where mosquitoes breed
- Proper waste disposal



REDUCING DEATHS AND SUFFERING FROM
TROPICAL DISEASES





FOGGING



REDUCING DEATHS AND SUFFERING FROM
TROPICAL DISEASES



VECTORS TARGETED

- *Aedes* – Dengue, Yellow Fever, Zika, Chikungunya



REDUCING DEATHS AND SUFFERING FROM
TROPICAL DISEASES



FOGGING

Fogging uses a mix of diesel and an insecticide targeting the adult *aedes vectors*



REDUCING DEATHS AND SUFFERING FROM TROPICAL DISEASES



FOGGING Insecticides & Formulations

Insecticide	Chemical Group	Active Ingredient Dosage g/ha	
		Cold Aerosols	Thermal Fogs
Fenitrothion (II)	Organophosphate	250-300	250-300
Malathion (III)	Organophosphate	112-600	500-600
Cyfluthrin (II)	Pyrethroid	1-2	1-2
α -Cypermethrin (II)	Pyrethroid	1-3	.
Cyphenothrin	Pyrethroid	2-5	5-10
Deltamethrin (II)	Pyrethroid	0.5-1.0	0.5-1.0
D-Phenothrin	Pyrethroid	5-20	.
λ -Cyhalothrin (II)	Pyrethroid	1	1
Permethrin	Pyrethroid	5	10
Pirimiphos-methyl (actelik)	Organophosphate	200-500	200-500
Bendiocarb	Carbamate	200-500	150-400



REDUCING DEATHS AND SUFFERING FROM
TROPICAL DISEASES



FOGGING

- Space sprays applied either as thermal fogs or as ultra-low volume applications in the form of a cold aerosol
- Portable or vehicle-mounted thermal or cold fog generators used for ground application
- Space sprays applied when colder air closer to the ground, (early in the morning or in the evening). With *Aedes* spraying usually outdoors in early morning or late afternoon



REDUCING DEATHS AND SUFFERING FROM
TROPICAL DISEASES



FOGGING

Treatment Cycle

- For rapid reduction in vector density space treatment should be carried out every 2–3 days for 10 days.
- Further applications once or twice a week to sustain suppression of the adult vector population



REDUCING DEATHS AND SUFFERING FROM
TROPICAL DISEASES



FOGGING

Precautions

- When treatment is carried out with portable equipment, operators should take special safety measures. Protective clothing, face masks, operate the equipment for short periods.
- Fogging in urban areas can be a traffic hazard, and spotted staining of vehicles may result



REDUCING DEATHS AND SUFFERING FROM
TROPICAL DISEASES



FOGGING ISSUES

- Expensive as it must be repeated several times at short intervals (3 to 4 times in a week)
- Needs special equipment
- *Aedes* adults re-infest
- Not effective on its own (NEED IVM) larvicide, garbage control



REDUCING DEATHS AND SUFFERING FROM
TROPICAL DISEASES





FLY CONTROL

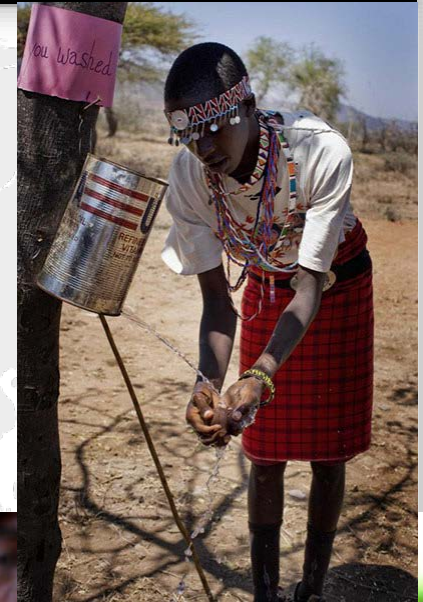


REDUCING DEATHS AND SUFFERING FROM
TROPICAL DISEASES



FLIES IN EMERGENCIES

- Overcrowding, open defecation
- Fecal matter in latrines
- Limited water, sanitation and hygiene
- Numerous breeding sites for flies



REDUCING DEATHS AND SUFFERING FROM TROPICAL DISEASES



SANITATION

- The first and best method for long-term vector control
- Three areas for control:
 - Preventing access of flies to toilets
 - Destroying other fly breeding sites (managing garbage)
 - Eliminating contact between flies and children, food, and utensils



REDUCING DEATHS AND SUFFERING FROM
TROPICAL DISEASES



FLY CONTROL AND LATRINES

Common problems

- Not enough toilets
- Improperly used facilities
- Lack of cover on latrines

Situation of latrines

- At least 6m from living area
- If no latrines are available, establish defecation area 500m away from living area and 30m from water

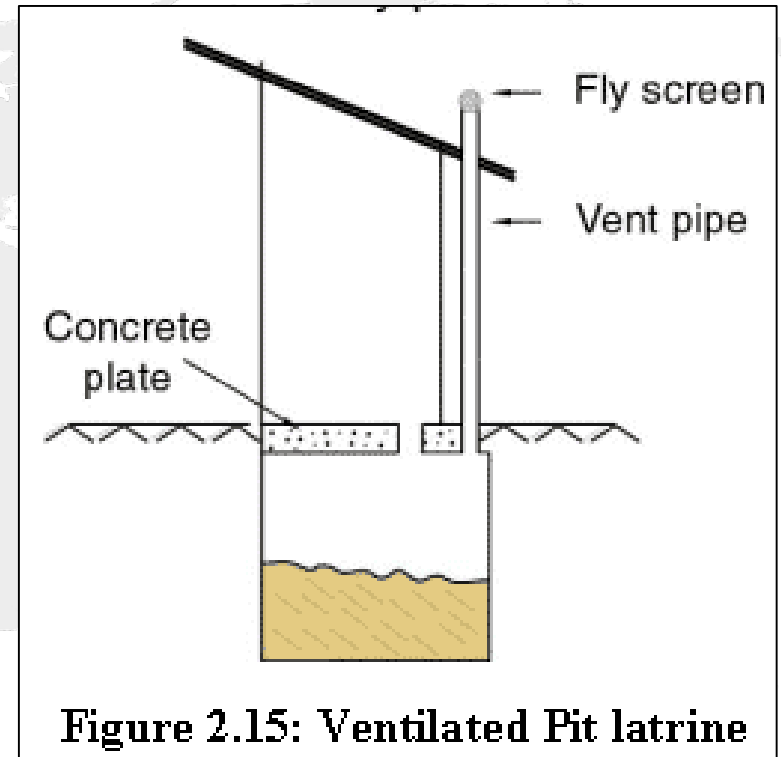


REDUCING DEATHS AND SUFFERING FROM
TROPICAL DISEASES



VIP LATRINES

- Constructed incorporating a tall vertical ventilation pipe topped with a tightly fitting fly screen
- Fecal odours in the VIP latrine exit through ventilation pipe. Flies attracted by odors aggregate around the top of the pipe but screen prevents entrance.
- Flies that manage to enter the pit, ascend the ventilation pipe but are prevented from escaping; desiccate



REDUCING DEATHS AND SUFFERING FROM
TROPICAL DISEASES



VIP LATRINE ADVANTAGES

- Flies and odours are significantly reduced
- Can be built and repaired with locally available materials
- Does not require a constant source of water
- Can be used immediately after construction
- Low (but variable) capital costs depending on materials



REDUCING DEATHS AND SUFFERING FROM
TROPICAL DISEASES



VIP LATRINE ISSUES

- There is still a *risk of groundwater contamination.*
- *Sludge requires secondary treatment & discharge*
- Health risks from *flies are not completely removed by ventilation*
- *Pits are susceptible to failure/overflowing* during floods, Stagnant water in pits *may promote insect breeding*
- Manual *emptying of pit poses severe health hazard*



REDUCING DEATHS AND SUFFERING FROM
TROPICAL DISEASES



POLYSTYRENE BEADS FOR PIT LATRINES

- Application of expanded polystyrene beads onto water sources and pits
- Polystyrene beads form a floating layer on the water
- A complete layer 1–2 cm thick is sufficient to prevent breeding
- Additional advantage is the suppression of the odour that emerges from the pit.
- The layer of beads reforms after disturbance



REDUCING DEATHS AND SUFFERING FROM
TROPICAL DISEASES



POLYSTYRENE BEADS AND PIT LATRINES

- If a pit dries out the beads are buried under faeces, the beads return to the surface when water enters the pit due to their buoyancy .
- The beads will last for several years provided they are not swept away by flooding



REDUCING DEATHS AND SUFFERING FROM
TROPICAL DISEASES





MANAGING WASTE



REDUCING DEATHS AND SUFFERING FROM
TROPICAL DISEASES



MANAGING WASTE

- *Garbage and organic waste are the perfect breeding grounds* for flies, and must be managed properly for effective control.
- In humanitarian crises, where removal of waste may not be feasible, a recommended method is *disposing of solid waste in a pit* that is positioned away from living areas.



REDUCING DEATHS AND SUFFERING FROM
TROPICAL DISEASES





REDUCING DEATHS AND SUFFERING FROM
TROPICAL DISEASES



CONTACT BETWEEN FLIES AND HUMANS

- Installing screens in eating areas and healthcare
- Fly exclusion from food, food preparation, eating areas
 - *Screening / LLI Curtains*
 - *Proper containers for food*
 - *Fly traps*

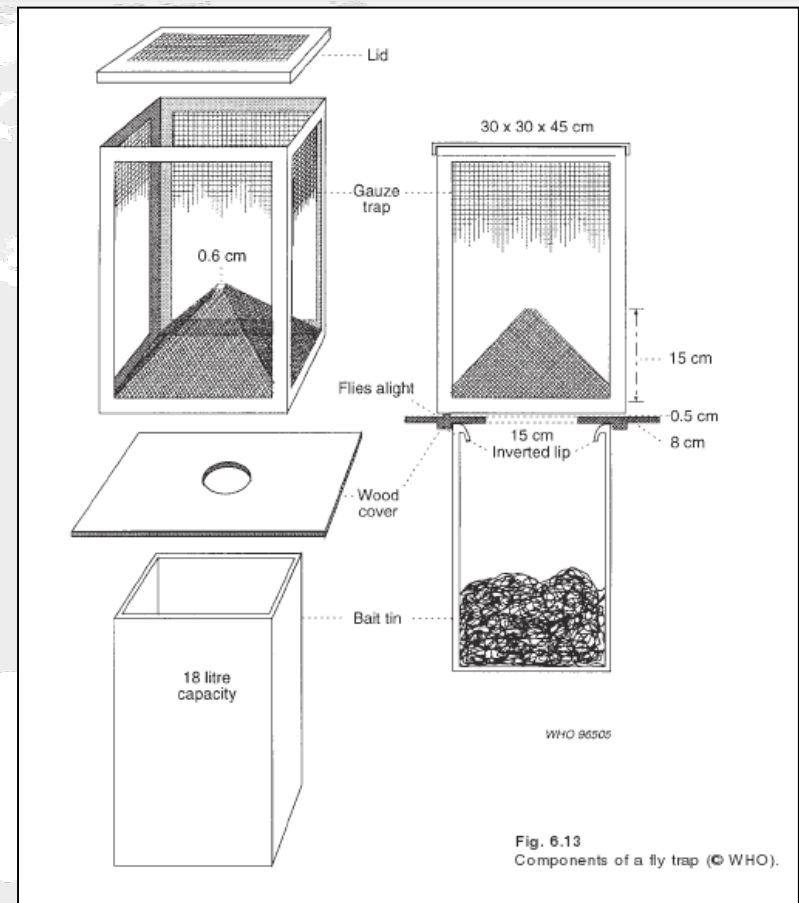


REDUCING DEATHS AND SUFFERING FROM
TROPICAL DISEASES



FLY TRAPS

- Traps will not stop a large-scale infestation, but should be used in targeted areas, *medical and food facilities*
 - Light traps (not to be used near food, as they may cause flies to explode, releasing pathogens)
 - Sticky tape



REDUCING DEATHS AND SUFFERING FROM TROPICAL DISEASES



STICKY TRAPS

- Fly Abatement Strips (e.g., Quickstrike®)
- Contain a cardboard strip coated with a sugar mixture containing a pesticide.
- Toxicity to flies occurs rapidly upon ingestion
- Should be protected from moisture and direct sunlight.
- This pile of dead flies seems to be extremely attractive to other flies. Placing strips in a can will increase effectiveness



REDUCING DEATHS AND SUFFERING FROM
TROPICAL DISEASES



LIGHT TRAPS

- Light traps fitted with sticky cards available, effective indoors and around food preparation areas to remove flies
- Attract flies to ultraviolet light



REDUCING DEATHS AND SUFFERING FROM
TROPICAL DISEASES



CHEMICAL METHODS

Best to be used for short periods, because flies develop insecticide resistance rapidly

- Zero-Fly tarps (ITPS)
- Space spraying
- Treating resting sites with residual chemicals



REDUCING DEATHS AND SUFFERING FROM
TROPICAL DISEASES



CHEMICAL METHODS

- Can be used **indoors (IRS)** or **outside**
- **Spraying of VIP latrines**
- Appropriate for immediate, short-term control
 - Reduction in fly population is achieved rapidly and efficiently, but does not last
 - Useful for spraying immediately after dumping of garbage



REDUCING DEATHS AND SUFFERING FROM
TROPICAL DISEASES



CHEMICAL METHODS

- A compound that combines high activity on target insects and low activity on mammals is Diflubenzuron (Dimilin[®]) a Chitin Deposition Inhibitor.
- Diflubenzuron should be applied on the upper layer of the breeding places (faeces) using a knapsack sprayer with hand lance.



REDUCING DEATHS AND SUFFERING FROM
TROPICAL DISEASES





**INFORMATION, EDUCATION AND
COMMUNICATION (IEC)
BEHAVIOUR CHANGE COMMUNICATION (BCC)**



**REDUCING DEATHS AND SUFFERING FROM
TROPICAL DISEASES**



WHY DO WE NEED IT?



REDUCING DEATHS AND SUFFERING FROM
TROPICAL DISEASES



DEVELOPING STRATEGIES

An understanding of what people do

- what prevents them from following the desired practices ("barriers") and
- what facilitates them ("enabling factors") - is essential before designing a communication intervention



REDUCING DEATHS AND SUFFERING FROM
TROPICAL DISEASES



WHAT DO PEOPLE KNOW?

Many misconceptions may exist about health and the causes of disease

Examples: clearing bushes, stepping in urine, nets infested with ghosts, mangoes bring malaria

Give some examples & key messages to tackle them



REDUCING DEATHS AND SUFFERING FROM
TROPICAL DISEASES



SUCCESSFUL HEALTH EDUCATION

- DEFINE the objectives for your education
- IDENTIFY the target audience
- DEFINE the desired behaviours you need to achieve in order for your prevention tool/strategy to work
- DEVELOP clear messages
- Coordinate/ Harmonise between partners / agencies



REDUCING DEATHS AND SUFFERING FROM
TROPICAL DISEASES



SUCCESSFUL HEALTH EDUCATION

- Use language and methods that are CULTURALLY ACCEPTABLE
- Deliver messages through individuals known and trusted by communities
- Provide training and materials that have been tested and retested



حملة مكافحة الليشمانيا (حبة حلب)

طرق الانتقال:
داء الليشمانيا الحدي هو مرض متعلق بالبيئة حيث ينتشر في أماكن انتشار ذبابة الرمل أكثر المناطق التي تنتشر فيها ذبابة الرمل.

- ♦ حظائر الحيوانات قرب المنازل
- ♦ أنقاض المباني المتهدمة
- ♦ مناطق القمامة والنفايات
- ♦ العصوره المكشوفه

تصالح وهاتيه لمرضى الليشمانيا.

تجنب التعرض لتناقل حبة الرمل وذلك عن طريق ما يلي:

- ♦ وضع الشبكات أو لعميل على الابواب والنوافذ
- ♦ النوم تحت البومسات
- ♦ لا تفضل هذه البومسات اسبوعيا لان ذلك يرفع رتف المبيد الحشري
- ♦ لا تتجمع في الأسس
- ♦ تجنب النوم في المناطق المظلله
- ♦ ارتداء الثياب ذات الكمام الطويله واستخدام المبيد الحشري في المناطق المكشوفه

مساعدة فرق رش المبيدات الحشرية بالمساح لهم بدخول المنزل ومساعدتهم في إزالة الأثاث

- ♦ رش مداخل المنزل رش الحطاب بمبيد حشري واذى
- ♦ مسح منزل محصني من حباته الرمل لعدة 8 اشهر
- ♦ من الممكن ظهور حالات ليشمانيا بعد عدة اشهر من رش المنزل وذلك لأنه من الممكن ان تكون الإصابة قد حدثت قبل عملية الرش وظهورت بعدما بعثته (من 1 يوم إلى 8-10 أشهر بعد الرش)

تفاصيل العلاج

♦ في حالة العلاج ياحق ن داخل الامه ويجب التأكد على ان الحغن خارج هامش الفسه (في أكثر من مكان حول الفسه) وليس في منتصف الفسه أو في مكان واحد

♦ يعيد الفسه بعد الحغن الموصى به بضع ومالته وقد تتركق بقاعات الأنهية

♦ يجب على المريض إكمال كامل فترة العلاج يتأكد أنه قد تعافى كليا

♦ إن عدم الالتزام بكامل فترة العلاج قد يعرض المريض للنكس (ظهور الفسه مرة أخرى)

♦ افحصه أنه يبقى مصدر لنقل لعائلته وينقل



احصى نفسك وعائلتك من الليشمانيا (حبة حلب)







REDUCING DEATHS AND SUFFERING FROM TROPICAL DISEASES





IVM OPERATIONAL EXPERIENCE



REDUCING DEATHS AND SUFFERING FROM
TROPICAL DISEASES



YOUR EXPERIENCE

- Describe the context
- What vector borne diseases are present?
- What vectors are present?
- What has been done?
- What could be done better, or changed?
- What could be integrated with other agencies/ programmes?



REDUCING DEATHS AND SUFFERING FROM
TROPICAL DISEASES

